

Integrated Knowledge Hair & skin.

Design your own skin structure

Now that you have seen the skin trifle, your task is to use your imagination to create your own version of the skin structure using anything you see as good replacements for parts of the skin. You could try using sweets, arts and crafts products or toiletries, for example.

Make a list of the ingredients needed below:

.....

.....

.....

.....

.....

.....

.....

.....

.....

.....

.....

.....

.....

If possible make your skin structure and showcase this to the rest of your group. If this is not possible, draw a diagram of how it would look below:

Integrated Knowledge Hair & skin.

Quick skin questions

1 What is the function of the hair follicle?

.....

2 How many layers does the epidermis have?

.....

3 What is the function of the sebaceous gland?

.....

4 What does the arrector pili muscle do to the hair shaft?

.....

5 What does blood feed the hair and skin with?

.....

6 What is the function of the sweat gland?

.....

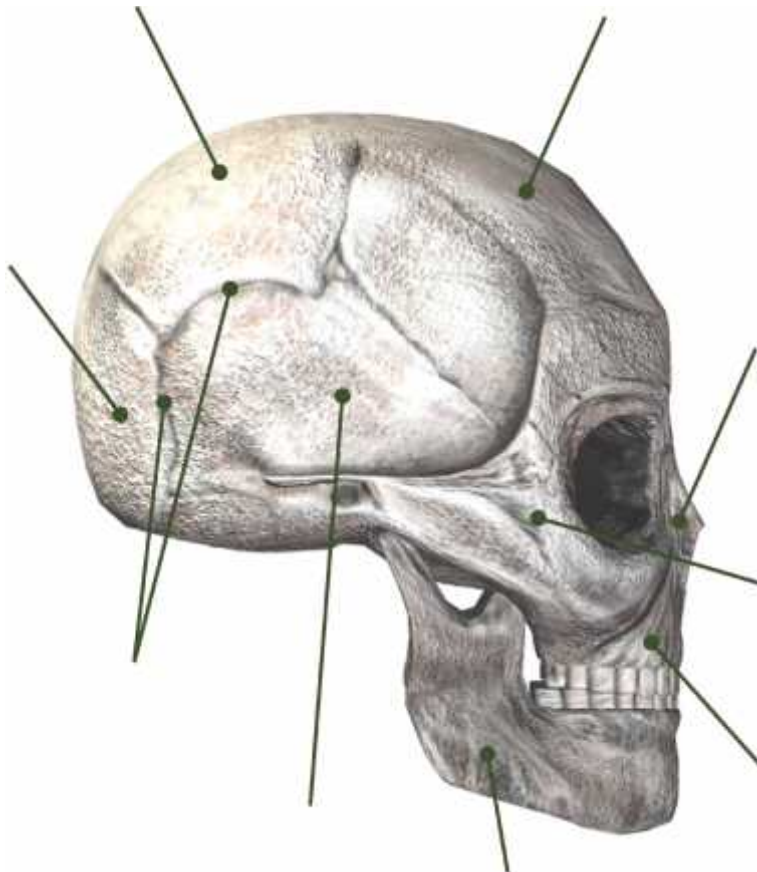
7 What does the dermal papilla do?

.....

Integrated Knowledge Hair & skin.

Bones of the face and skull

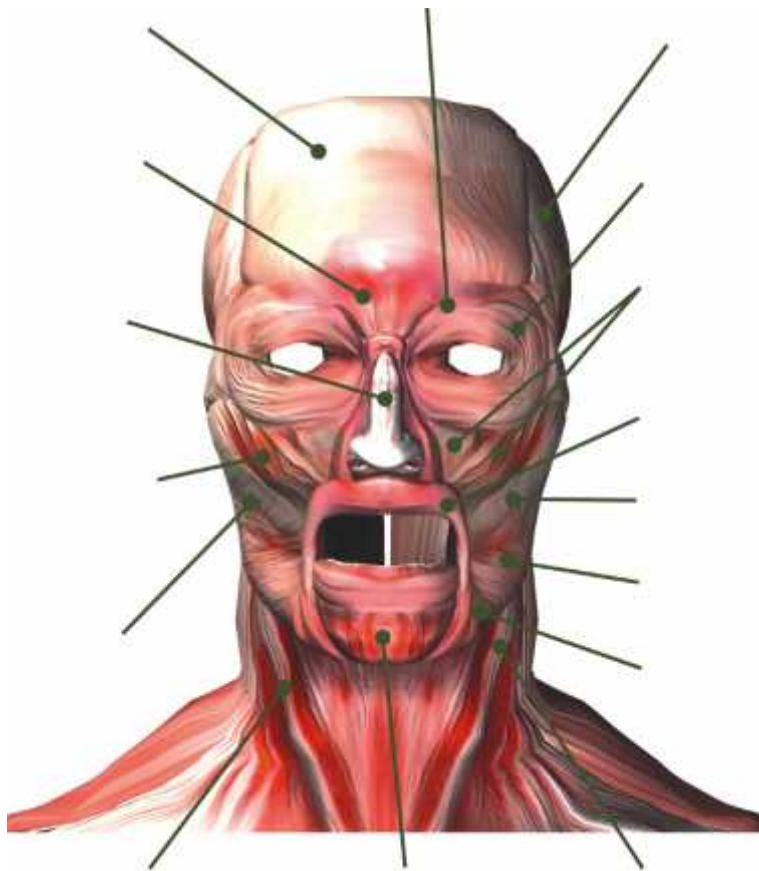
You have learned about the bones of the face and skull. Using the diagram of the skull below, identify each bone by labelling it correctly. (This activity can only be completed using a hard copy.)



Integrated Knowledge Hair & skin.

Muscles of the head and neck

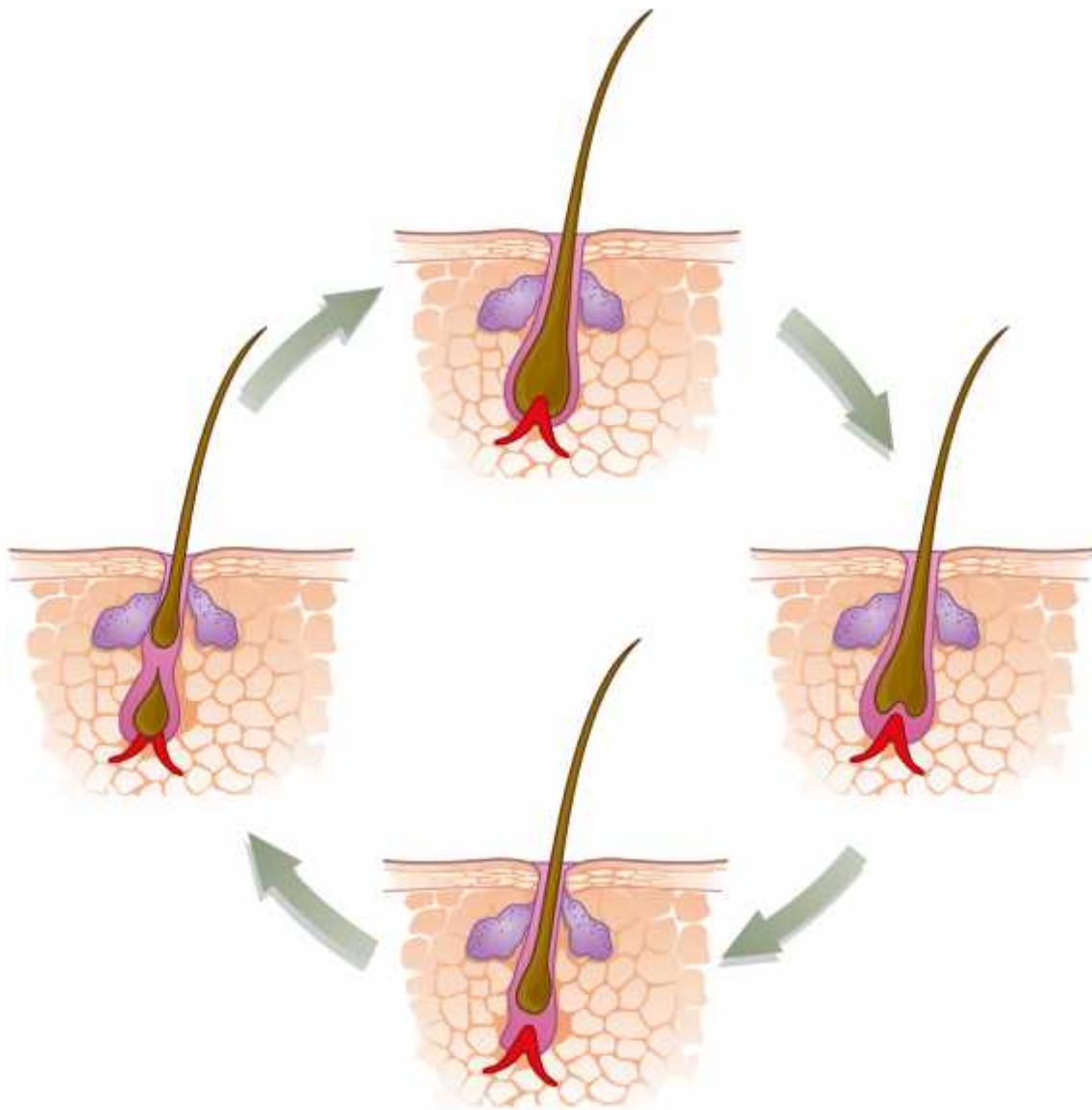
You have learned about the muscles of the head and neck. Using the diagram below, identify each muscle by labelling it correctly. (This activity can only be completed using a hard copy.)



Integrated Knowledge Hair & skin.

Hair growth cycle

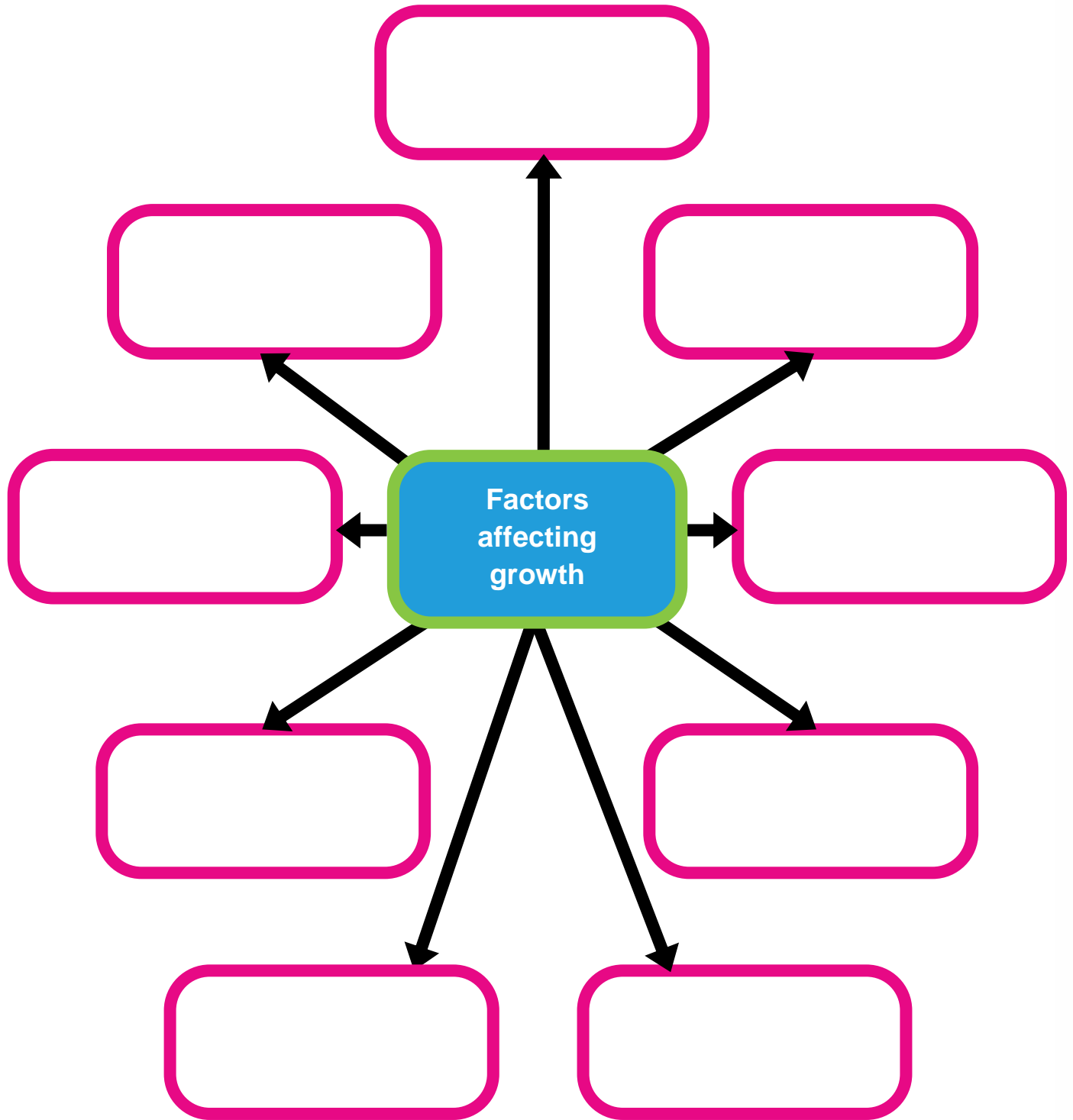
Do you remember what you have learned about the growth cycle of hair? Label the diagram below with the correct stages in the growth cycle. (This activity can only be completed using a hard copy.)



Integrated Knowledge Hair & skin.

Factors affecting the growth cycle of hair

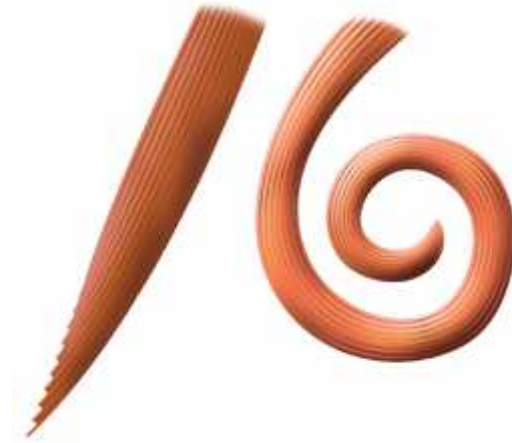
You have learned about the factors that affect the hair growth cycle. Complete the diagram below by adding in these factors.



Integrated Knowledge Hair & skin.

Alpha and beta keratin

Look at the diagrams of alpha and beta keratin below. Now add your own explanation of what happens to naturally straight and naturally curly hair during changes from alpha to beta keratin.



.....

.....

.....

.....



.....

.....

.....

.....

Integrated Knowledge Hair & skin.

Understanding the pH scale

1 How can pH be tested?

.....

.....

2 State the number on the pH scale for neutral.

3 Alkaline pH levels range from to

4 Acidic pH levels range from to

5 What effect does a mildly acidic pH have on the cuticle?

.....

.....

6 What effect does an alkaline pH have on the cuticle?

.....

.....

7 In the chart below, record the findings of pH testing on a range of styling products.

Product type	pH value	Acid or alkali?